

WP 011/075/23 2 x DN50/125 ~ 32 m

Pieniąska (dz. nr 438/26)

2 x DN50/125 ~ 20 m

Pieniąska (dz. nr 439/10)

WP 029/075/22

2 x DN65/160 ~ 54 m

E 434/6

2 x DN100/225 ~ 103 m

F 434/5

A  
Nco = 98 kW  
Ncwu = 100 kW (120 osób)

B  
Nco = 98 kW  
Ncwu = 100 kW (120 osób)

D 2 x DN80/180 ~ 85 m

G 434/4

Dla budynków mieszkalnych A: B: C: D:  
przyłącza ciepłownicze 2 x DN50/140 ~ 82 m

WP 028/075/22

2 x DN65/160 ~ 70 m

C  
Nco = 98 kW  
Ncwu = 100 kW (120 osób)

D  
Nco = 98 kW  
Ncwu = 100 kW (120 osób)

E 2 x DN50/140 ~ 92 m

H 434/3

2 x DN40/125 ~ 45 m

WP 031/075/22

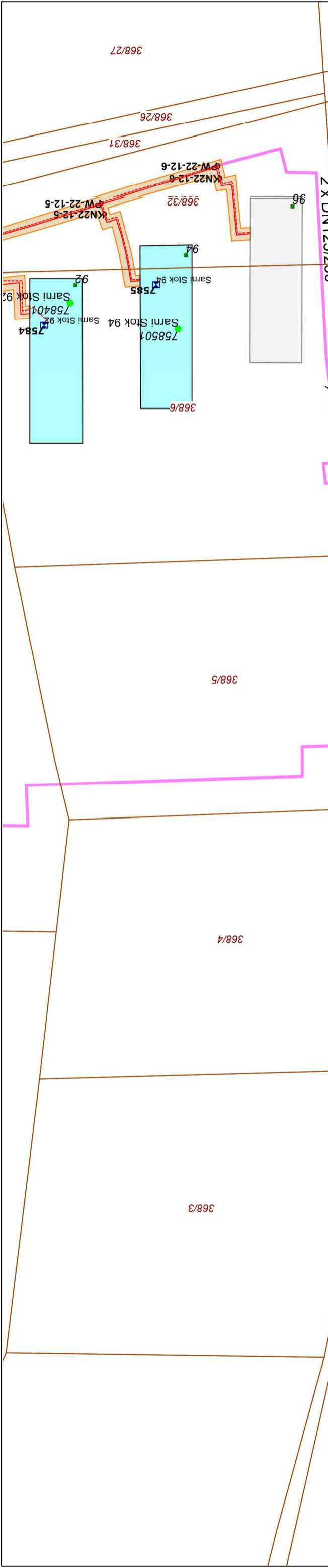
1  
2

WP 022/075/21

Restauracja (1)  
Nco = 15 kW  
Ncwu = 15 kW  
Nwent = 20 kW  
Budynki mieszkalny (2)  
Nco = 36 kW  
Ncwu = 85 kW (100 osób)

2 x DN125/250

2 x DN125/250 ~ 134 m



401/51  
401/23  
401/26  
401/27  
401/28  
401/29  
401/30  
401/31  
401/32  
401/33  
401/34  
401/35  
401/36  
401/37  
401/38  
401/39  
401/40  
401/41  
401/42  
401/43  
401/44  
401/45  
401/46  
401/47  
401/48  
401/49  
401/50  
401/51  
401/52  
401/53  
401/54  
401/55  
401/56  
401/57  
401/58  
401/59  
401/60  
401/61  
401/62  
401/63  
401/64  
401/65  
401/66  
401/67  
401/68  
401/69  
401/70  
401/71  
401/72  
401/73  
401/74  
401/75  
401/76  
401/77  
401/78  
401/79  
401/80  
401/81  
401/82  
401/83  
401/84  
401/85  
401/86  
401/87  
401/88  
401/89  
401/90  
401/91  
401/92  
401/93  
401/94  
401/95  
401/96  
401/97  
401/98  
401/99  
401/100